

Thermochromic Inks

Reversible Thermochromic

Irreversible Thermochromic



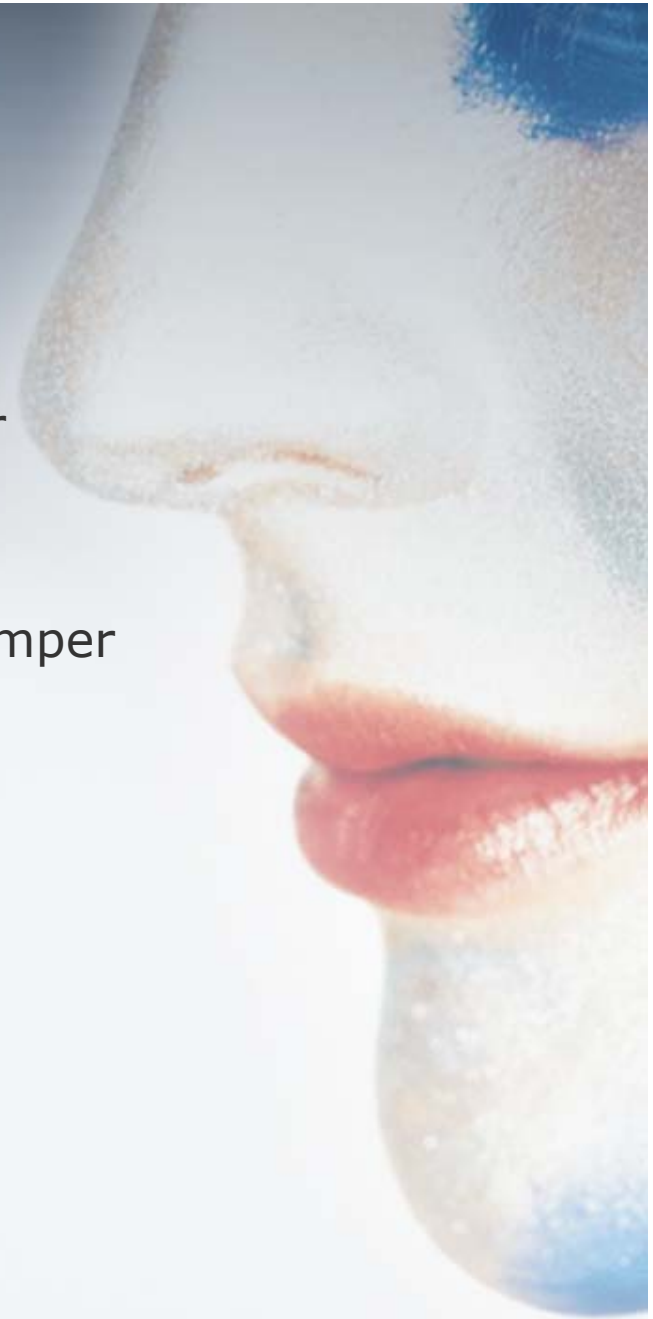
Thermochromic inks

■ Reversible Thermochromic

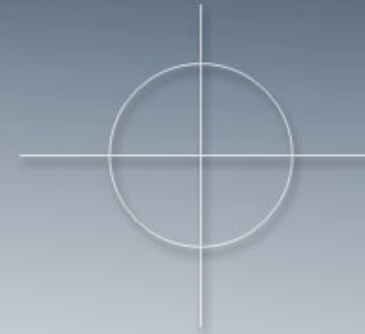
- From colour to colourless or colour to colour
- Changing for Cold or Hot (-10°C to 65°C)
- Can be used as temperature indicator for beverages, medicines and food. Also tamper evident for tickets

■ Irreversible Thermochromic

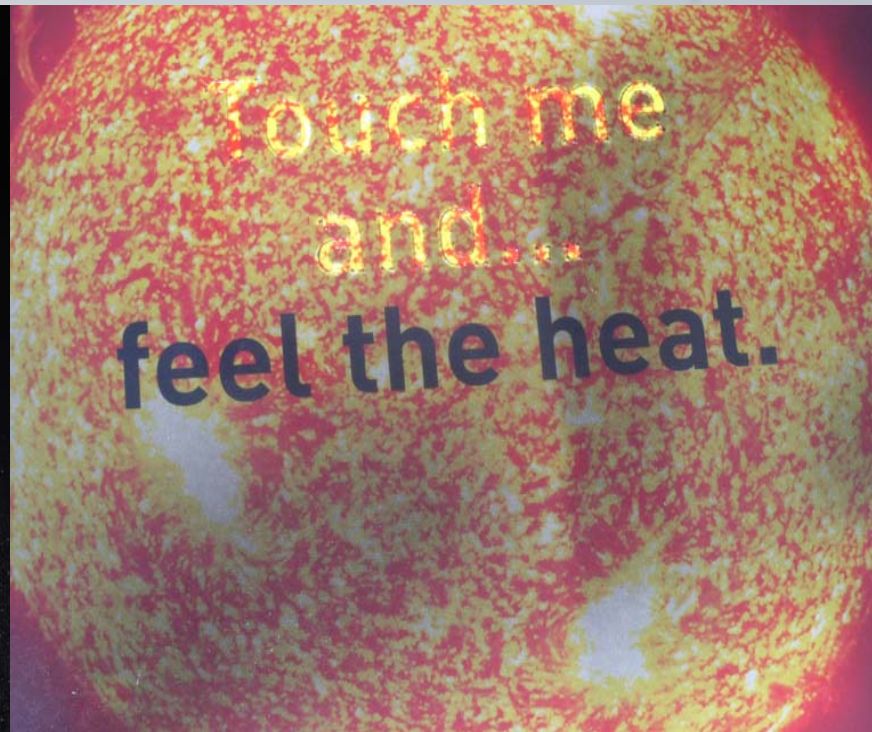
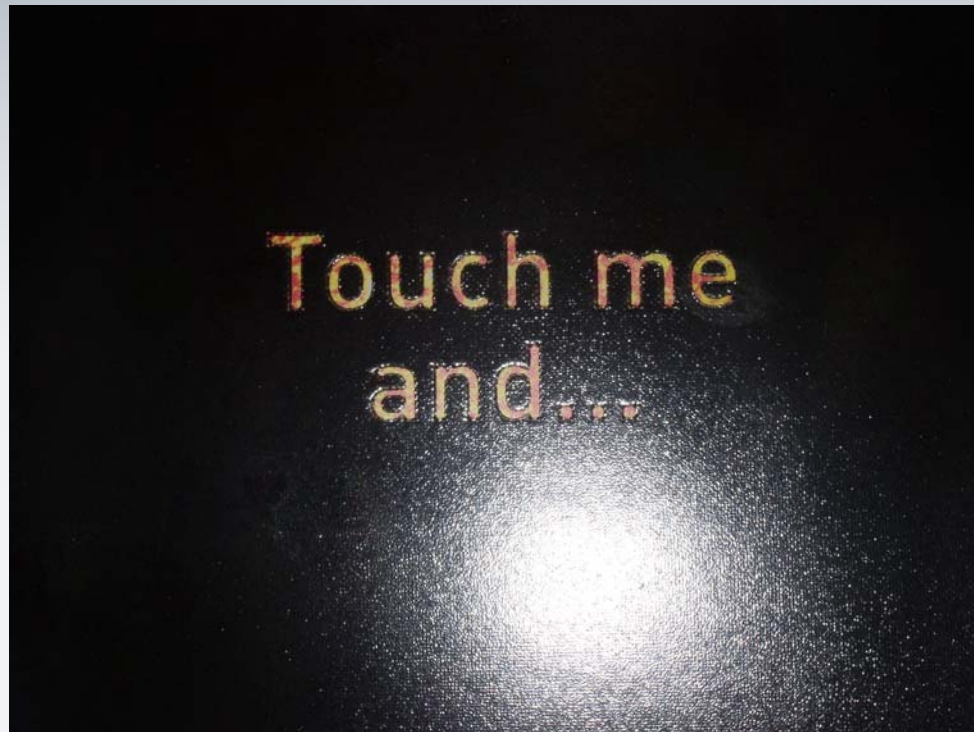
- From colourless to colour
- Limited shades & Temperature changes



Thermochromic inks



Reversible products



* Screen printed with TSS



Thermochromic inks

Range



Thermochromic	UV Screen	UV Flexo	UV Offset	UV LP	WB Flexo
Reversible	• • •	• •	•	•	• •
Irreversible	-	-	-	-	• •
• • • Highly recommended • Limited use - Not recommended					



Thermochromic ranges

- UV Letterpress (TSU)
 - UV curing letterpress/offset range
- Uvoglow S (TSF)
 - UV curing flexo range
- UV Screen (TSS)
 - UV curing rotary screen range
- Waterbased Flexo (TSH)
 - WB flexo range



Print Advice- Thermochromic inks



Parameter		WB Flexo	UV Flexo	UV Offset	UV Screen
Anilox	Lines/cm	80-160	80-160	-	-
	Vol cm ³ /m ²	7 - 12	7 - 12	-	-
Screen type	Gallus	-	-	-	KS
	Stork	-	-	-	13%
Approx film weight (g/m ²)		-	-	1,8-2,5	-
UV Lamp (W/cm)			160	120	160
Print speed (m/min)		40-60	40-80	40-60	40-60

